

**New!**

Receive data from a Vantage Pro integrated sensor suite or special-purpose station, and post it to your computer—no console required! Our Weather Envoy, when used along with a WeatherLink data logger and software package, will collect and store data from the outdoor sensors. Download the data to your computer at your convenience, then use the WeatherLink software to view current conditions at a glance, graph and chart historical data, or even create your own weather web pages.

### Weather Envoy™

With Weather Envoy, you can:

- Save money in situations where a console is not required. Use in your home or office, or set up a remote field station with Weather Envoy inside our Multi-Purpose Shelter.
- Use in addition to a Vantage Pro console/receiver. Put the console/receiver in the kitchen or bedroom, and Weather Envoy in your office or study, next to your computer.

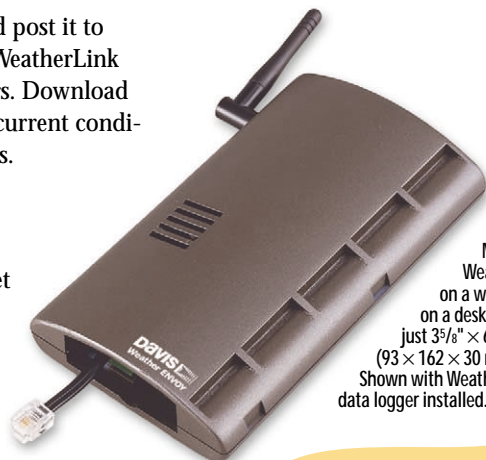
Weather Envoy includes its own barometer and inside temperature and humidity sensors, just like those found on the Vantage Pro console or console/receiver. Both the wireless and cabled versions include an AC-power adapter. The wireless station may also be run using three AA batteries. Batteries will last up to six months, depending on the logging interval. Batteries should also be added to the cabled station for backup during power outages.

6314 Wireless Weather Envoy W390,000

6314C Cabled Weather Envoy W330,000



See page 12 for details on WeatherLink.

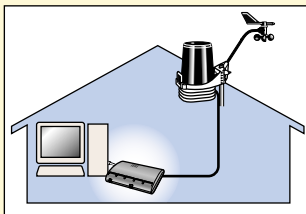


Mount Weather Envoy on a wall or use it on a desk. Measures just 3 5/8" × 6 3/8" × 1 1/8" (93 × 162 × 30 mm). Shown with WeatherLink data logger installed.

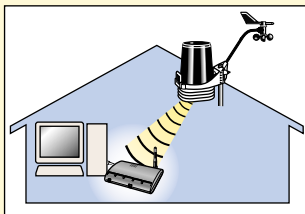
Requires WeatherLink data logger and software package (not included).

### Receive data directly from the outdoor sensors—no console required!

Install wireless or cabled Weather Envoy in your home or office, next to your computer for easy and convenient downloading.



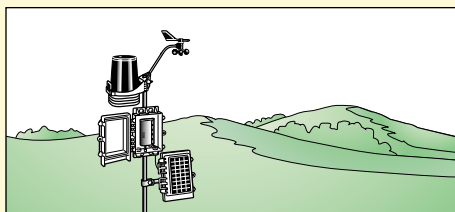
Cabled Home/Office Station



Wireless Home/Office Station

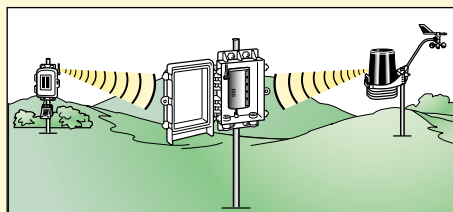
### Use as a wireless or cabled field station.

Download data to your laptop whenever convenient—every day, or every 6 months. Or swap one WeatherLink data logger for another, and bring it to your home or office for downloading.



#### Cabled Field Station

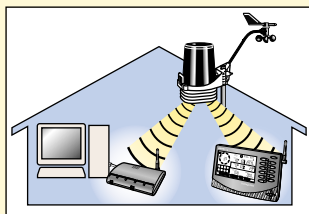
With Multi-Purpose Shelter and 7707 Solar Power Kit. Choose the cabled station when terrain or RF interference makes wireless impractical.



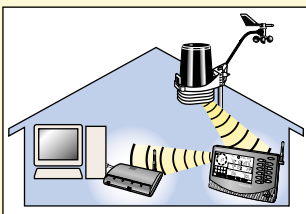
#### Wireless Field Station

With Multi-Purpose Shelter. Run Weather Envoy using three AA batteries (batteries last up to six months) or add our 6610 Solar Power Kit for more remote locations.

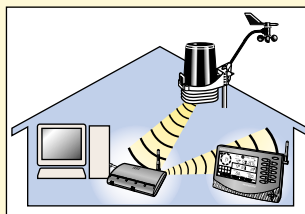
### Or use in addition to a wireless Vantage Pro console/receiver.



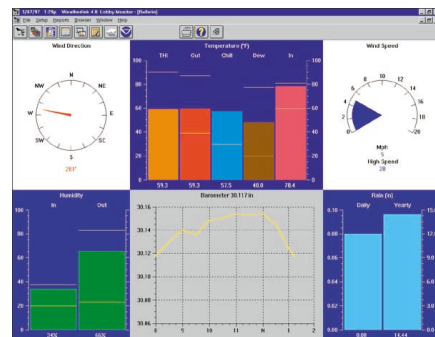
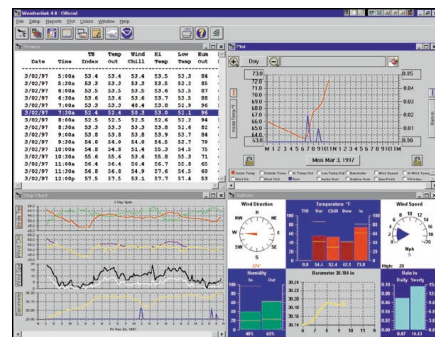
**Transmit to Both Simultaneously**  
Transmit data from the outdoor sensors to both the console/receiver and Weather Envoy simultaneously.



**Retransmit Data to Weather Envoy**  
Transmit data from the outdoor sensors to the console/receiver, and retransmit it to Weather Envoy.



**Retransmit from Weather Envoy**  
Transmit data from the outdoor sensors to Weather Envoy, and retransmit it to the console/receiver.



Sample WeatherLink screens. Actual screens may vary.

A cabled Weather Envoy can be used with ONE of the following:

- Cabled Integrated Sensor Suite, or
- Cabled Integrated Sensor Suite Plus

A wireless Weather Envoy can be used with ALL of the following:

- One wireless Integrated Sensor Suite or Integrated Sensor Suite Plus
- One Anemometer Transmitter Kit
- One Leaf & Soil Moisture/Temperature Station
- Three Temperature Stations or one Temperature Station and two Temperature/Humidity Stations.